

PSRC Regional Transportation Plan & Coordinated Mobility Plan Development

Seattle-King County Advisory Council on ADS | July 11, 2025

¡Hola!

您好

hello!

Здравствуйте!

Xin chào



Puget Sound Regional Council



We are leaders in the region to realize equity for all. Diversity, racial equity and inclusion are integrated into how we carry out all our work.

psrc.org/equity

Today

We will talk about...

- **Regional Transportation Plan**
- **Coordinated Mobility Plan**

AND will hear from you about...

- **Transportation Priorities of Your Community**

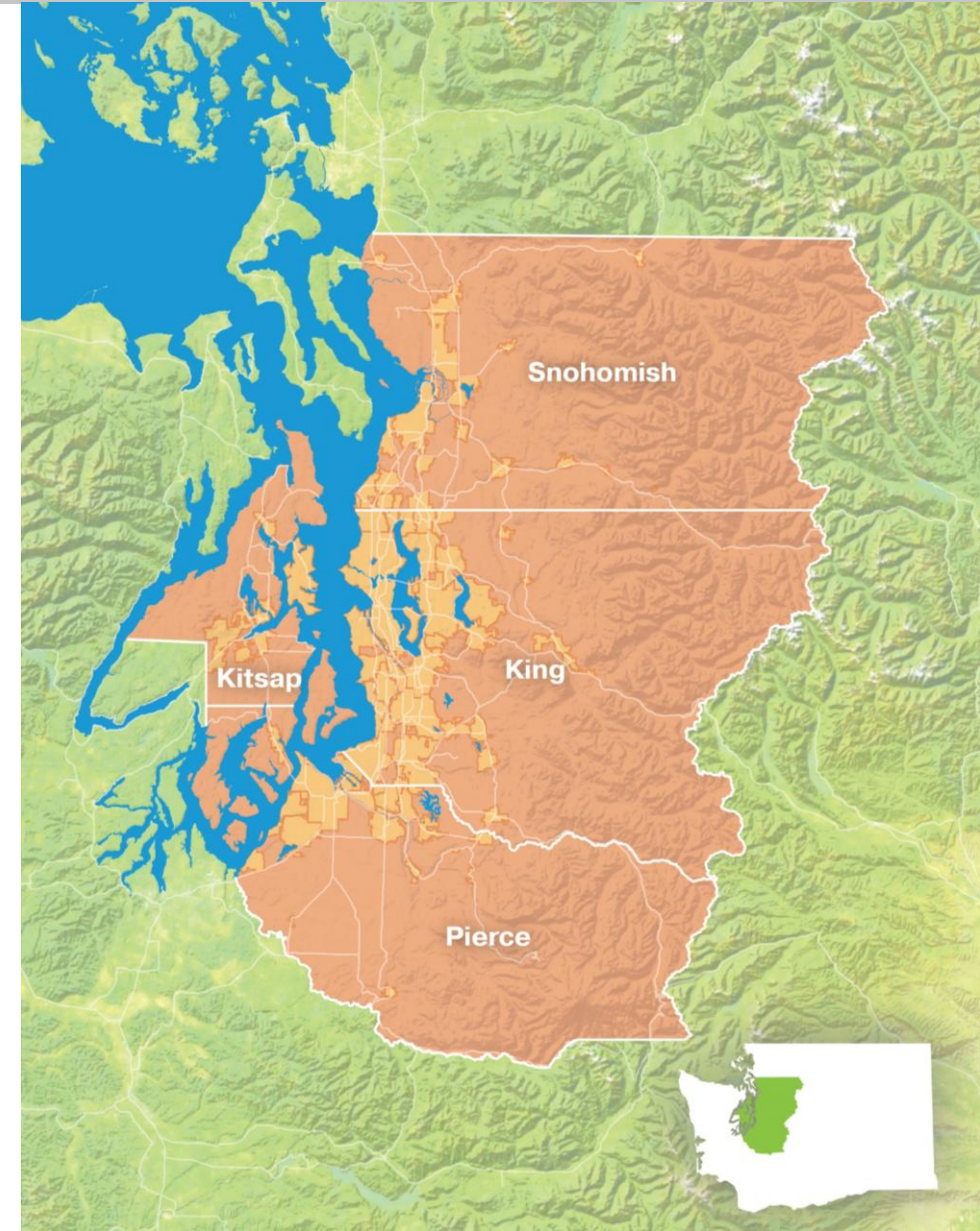


Who are we?



Puget Sound Regional Council

- Metropolitan Planning Organization
- Coordinates transportation, economic development, land use planning, and more.
- King, Kitsap, Pierce, and Snohomish counties (4.3 million people).
- Members include 82 cities and towns & 9 transit agencies.



What is a Regional Transportation Plan?

- Lays out the region's **long-term transportation needs and goals**.
- **Developed collaboratively** with cities, counties, transportation agencies, and the public.
- **Updated every four years** according to state and federal requirements.



Regional Transportation Plan Engagement



Online Engagement
Hub



Engagement
Meetings



Focus Group
Interviews



Social Media



Survey



Regional Public Meeting Schedule

King County:

- Downtown Seattle Public Library (09/04)
- Tukwila Community Center (10/23)

Snohomish County:

- Everett Train Station (9/18)

Pierce County:

- Pioneer Park Pavilion (10/02)
- Point Defiance Pagoda (10/16)

Kitsap County:

- Marvin Williams Recreation Center (10/30)



Coordinated Mobility Plan

- Highlights transportation needs of the **people with accessibility and mobility challenges**.
- **Lays out prioritized strategies** addressing the needs.
- Includes a **regional inventory** of existing transportation programs.



Transportation Options

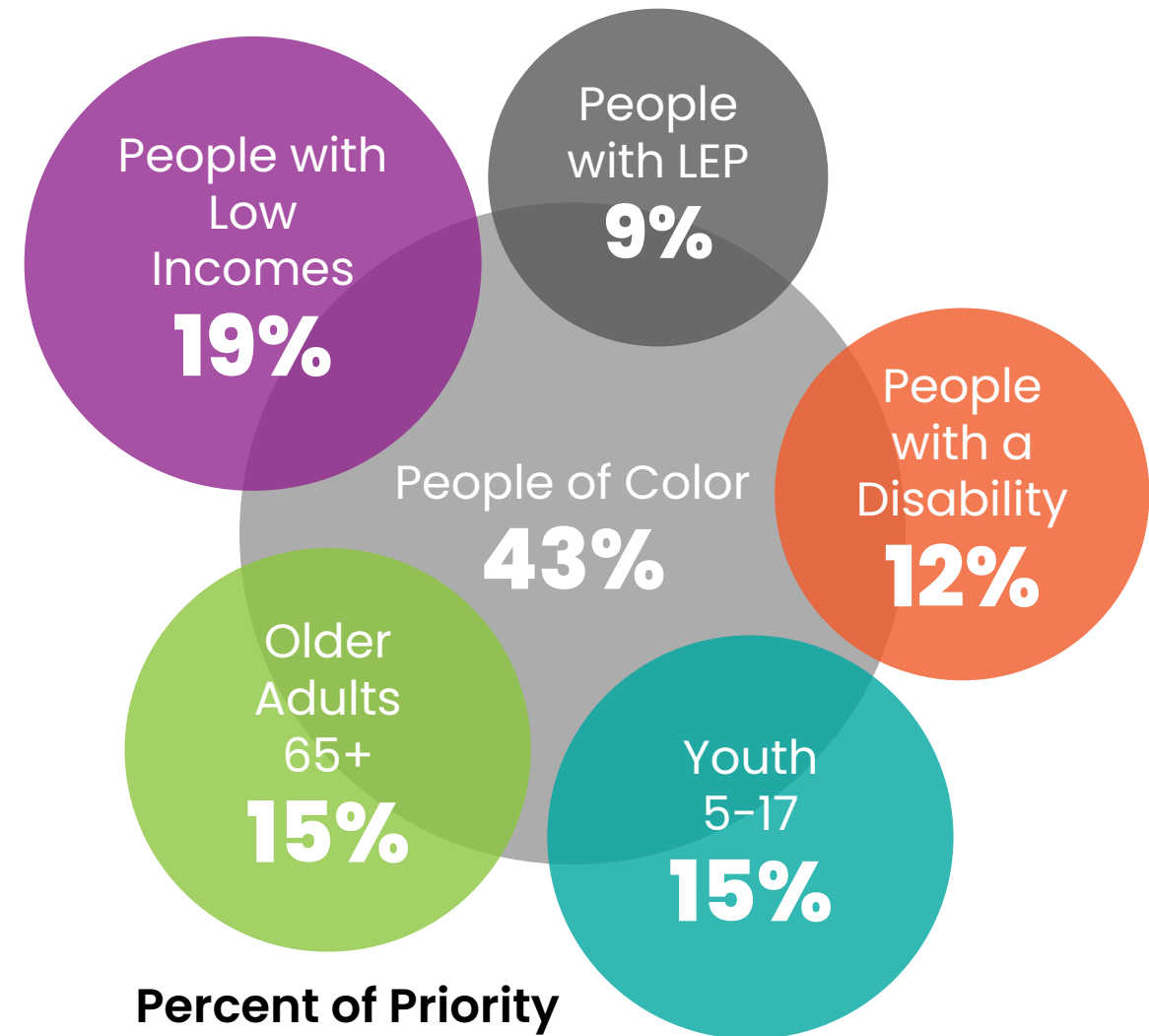


Specialized Transportation



A large percentage of our region's population falls into at least one of the priority populations.

- The number of **older adults, people with disabilities, and people with limited English proficiency** is growing faster than the overall population.
- About **1 in 5 people** in our region have **low incomes**.



**Percent of Priority
Population Percentage
Breakdowns, 2023**



Our region is aging and facing more accessibility needs.

- Across the region, about **1 in 3 adults aged 65 and older have a disability.**
 - For those over 85, 71% have at least one disability.
- By 2050, **1 out of every 5 people** in the region will be **65 or older.**

Data source: U.S. Census Bureau, American Community Survey 1-Year, 2023



multiple organizations working together for shared economies of scale, eliminate duplication, expand service, improve the quality of service to better address the regional transportation needs of transportation-disadvantaged people in the greater Sound region.

AL #1: PUT PEOPLE FIRST •

e should be able to afford transportation, use it safely, and get to where need to go without an overly burdensome process or trip. We should ensure fairness, justice, and equity in delivering transportation services.

PRIORITY STRATEGIES

A. Develop and implement transportation programs and projects that address needs and gaps identified in the Coordinated Plan.

B. Improve connections to and within the regional transportation system.

PRIORITY STRATEGIES

improvement of passenger facilities, transit mode share programs

Identified Transportation Needs



Are there any key transportation needs in your community that are missing or not fully captured in the list?

- More **frequent and expanded transit** service coverage, including more services **at times/days when needed** the most
- **Shorter travel times** and **easy transfers** with better cross-county/cross-agency coordination
- Improved **access to healthcare and essential services**
- More **accessible and safe infrastructure**, including more **amenities** at transit stops (seating, lighting, restrooms)
- More **rider education opportunities and awareness**



The image shows a public meeting or community engagement session. In the foreground, two people are seen from behind, looking at a large display of informational posters. The posters are titled 'GOAL #1: PUT PEOPLE FIRST' and 'PRIORITY STRATEGIES'. The text on the posters includes 'Multiple organizations working together for shared economies of scale, eliminate duplication, expand service, improve the quality of service to better address the regional transportation needs of transportation-disadvantaged people in the greater Sound region.' and 'Develop and deliver affordable, accessible, and innovative transportation programs and projects that address needs and gaps identified in the Coordinated Plan.' The background shows other people and more posters, suggesting a larger event. The entire image has a reddish-orange tint.

Feedback on Transportation Outcomes

We want to hear from you:

The following questions will help us understand **what success looks like for your community** when transportation needs are met.

Your feedback will shape the **strategies and desired outcomes** in the Coordinated Mobility Plan.



We want to hear from you:

What **outcomes** do you want to see for your community?

If transportation worked *perfectly* for **your community**, what would that look and feel like?

Identified Needs

- **More frequent and expanded transit service**
- **Cross-county/cross-agency** coordination
- Improved **access to healthcare and essential services**
- More **accessible and safe infrastructure**
- More **rider education opportunities and awareness**

We want to hear from you:

Which **transportation needs** feel most **urgent** to address where you live?

What are the **top 2 or 3 improvements** you'd like to see in the next 5 years?

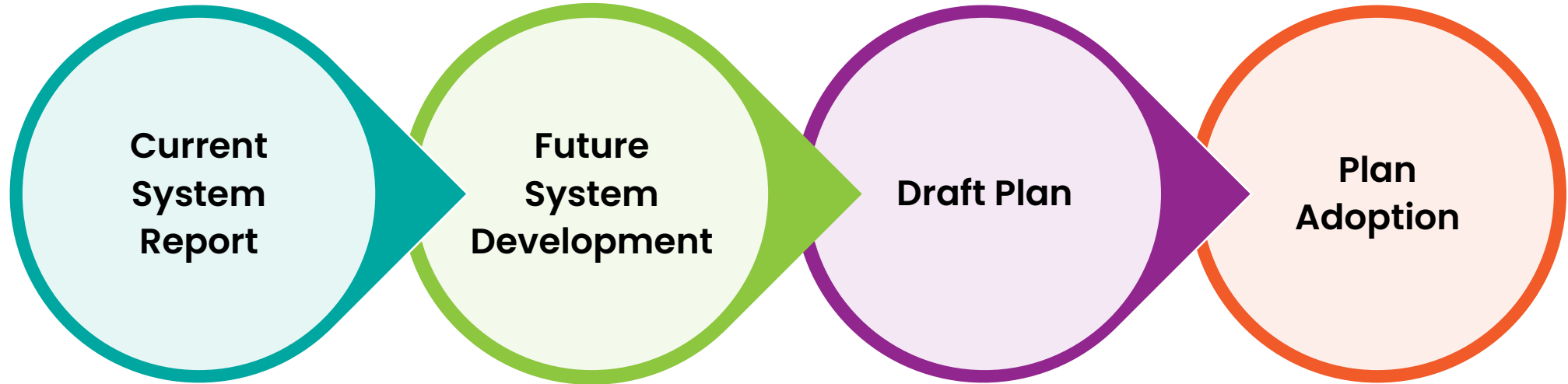
Identified Needs

- **More frequent and expanded transit service**
- **Cross-county/cross-agency** coordination
- Improved **access to healthcare** and **essential services**
- More **accessible** and **safe infrastructure**
- More **rider education opportunities** and **awareness**

Regional Transportation Plan Update Process

2025

2026



Community Engagement Informs the Plan
Transportation Needs & Priorities



Want to learn more about the transportation planning at PSRC?

- **Visit the Regional Transportation Plan Engagement Hub:**
<https://www.psrc.org/planning-2050/regional-projects/2026-rtp>
- PSRC website: www.psrc.org
- Email questions to: transportation@psrc.org



Thank You!

Jean Kim

Senior Planner

jkim@psrc.org

Erin Hogan

Associate Planner

ehogan@psrc.org



Puget Sound Regional Council