

# Community Living Connections

Planning Feedback Opportunity

2.9.24



**Seattle**  
Human Services  
Equity • Support • Community



# Notice

- Official information on funding opportunities is available through HSD Funding Opportunities webpage and in accordance with funding process policies:  
<https://www.seattle.gov/human-services/providers/funding-opportunities>
- All information shared in this presentation is for planning purposes and is subject to change



# Meeting Purpose and Agenda

- Background
- Program Model and Services
- Program Planning Process
- Service Proposals
- Next Steps and Resources



# Investment Process Background

- Guidelines and Application
- Application Review and Scoring



# Community Living Connections



# Program Background and Vision

- Federal initiative to streamline access to programs and services for older adults, adults with disabilities and caregivers
- Vision: All older adults, individuals with disabilities, and their families have the support and services needed to thrive in King County



# Eligible Populations

## Services for Older Adults and Adults with Disabilities

- Adults age 60+ and adults with disabilities (18+) living in King County.

## Services for Caregivers

- Unpaid caregivers living in King County - spouse, partner, relative, or friend (age 18 and older) who are actively providing care to an adult (age 18 and older) with a functional disability.
- Caregiver cannot receive financial compensation for providing care and the person receiving care must not be receiving Medicaid-funded long-term care services, or reside in nursing facility or adult family home



# Fund Sources

## Services for Older Adults and Adults with Disabilities

- Older Americans Act Title III-B, State Senior Citizens Services Act, TXIX Medicaid Admin Claiming,

## Services for Caregivers

- Older Americans Act Title III-E, State Family Caregiver





# How does Community Living Connections work?



# Central Access

206-962-8467

Toll Free: 1-844-348-5464 (King)







# Region Coordination

- Convene networking meetings with contracted *and* non-contracted partners
- Conduct outreach to build awareness of Community Living Connections

## **Three regions:**

- North King County, Seattle
- East King County
- South King County

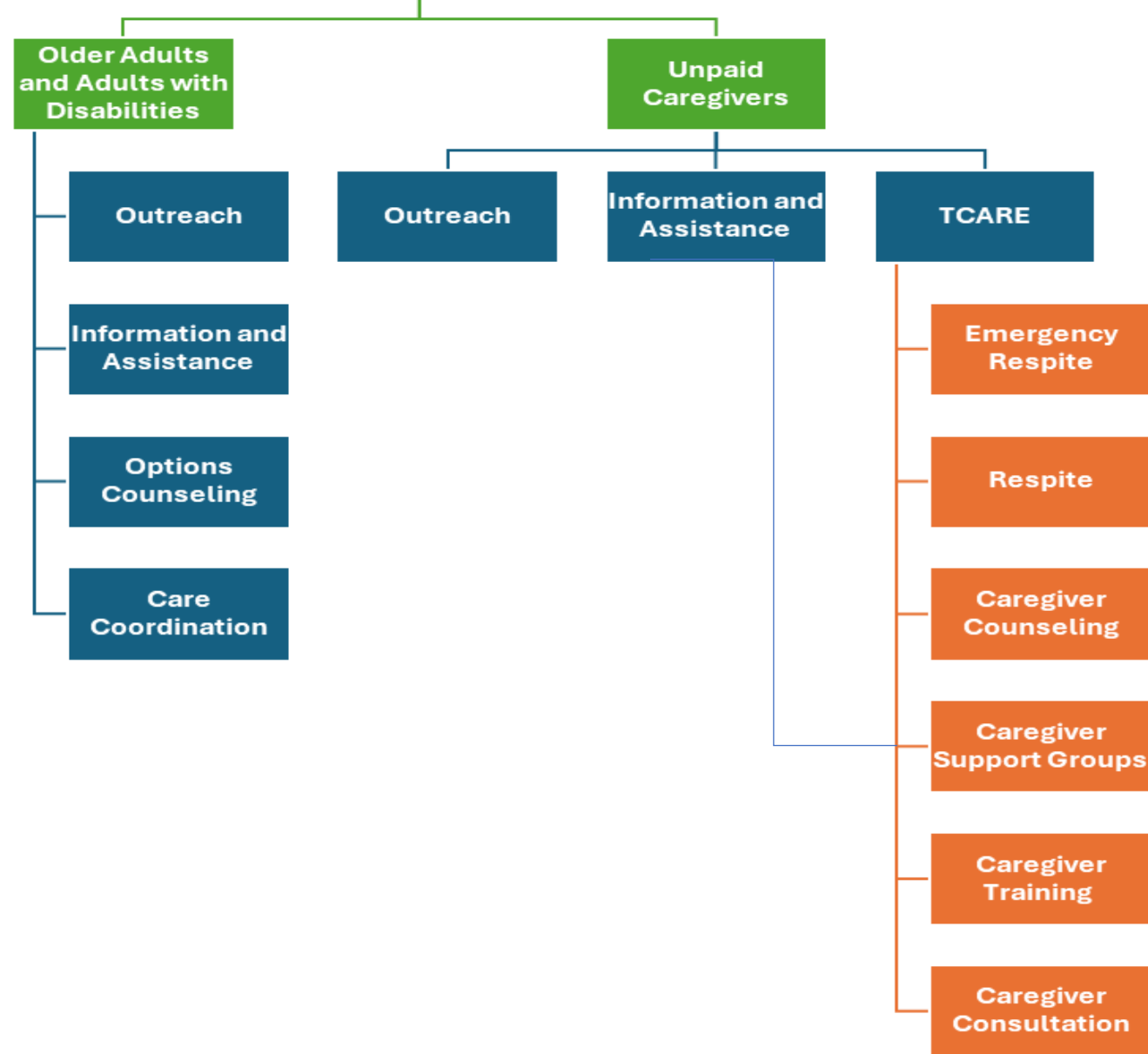


# Service Components



# COMMUNITY LIVING CONNECTIONS

— Seattle & King County —



# Program Planning





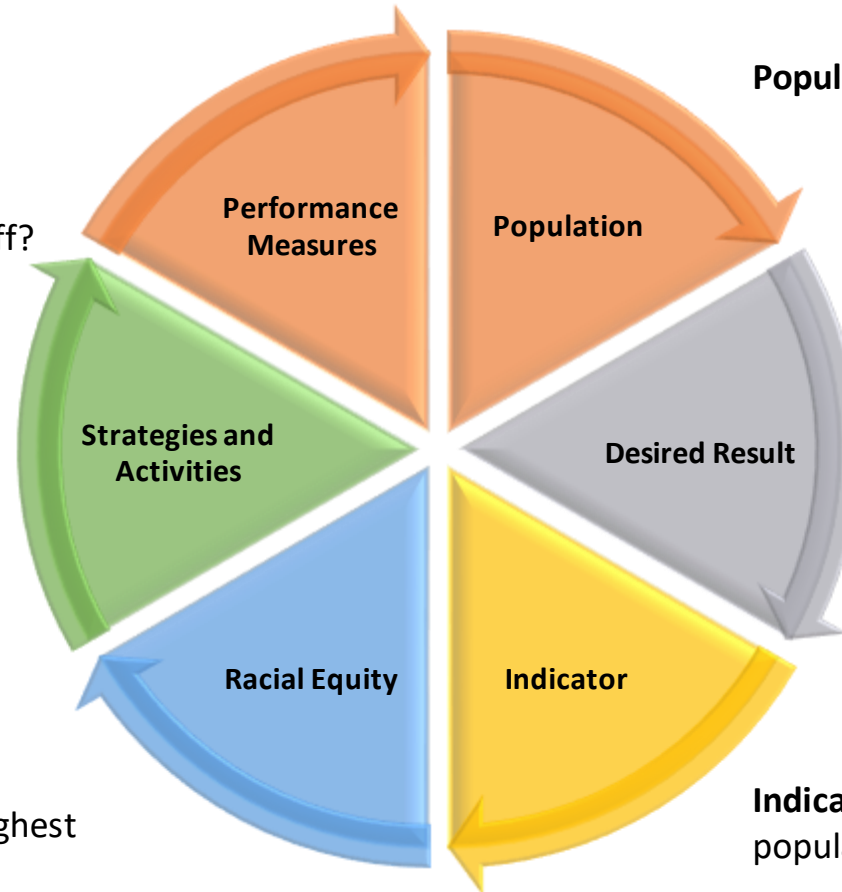
# HSD Theory of Change

**Performance Measures:** How will we know if our strategies and activities are working?

- Quantity – how much was done?
- Quality – how well was it done?
- Impact – is anyone better off?

**Strategies and Activities:** What will we do to achieve the result (these are what we purchase in a contract)

**Racial Equity:** Who are the communities of color with the highest disparities reflected in the data?



**Population:** Who do we want to affect?

**Desired Result:** What is the result we want for our population?

**Indicator:** Why is this result needed? Also population level baseline data.

# Community Engagement Topics

- Review and discussion of program data to establish baseline and forecast future
- Review and discussion of population data, including indicator and racial equity data and comparisons with program data
- Partnerships and strategies
- Barriers in reaching program area goals
- Community and capacity building needs



# Priority and Focus Populations

## **Priority Populations:**

- With greatest economic need; need resulting from an income level at or below the Federal poverty line.
- With greatest social need; need caused by non-economic factors.

## **Focus Populations:**

- Black, Indigenous and People of Color

# Program Measures


## Quantity:

- # individuals receiving access to information and support, by race
- # individuals engaged in caregiver service, by race

## Quality:

- #/% of individuals connected to services and supports, by race
- #/% of caregivers receiving an assessment and care plan, by race

## Impact:

- % of individuals that got the help or support they need from this program or service, by race
  - % of caregivers who feel confident in their ability to care for care receiver, by race
- 

# Themes

- Higher volumes, more complex cases & forecast continued growth due to aging population and heightened awareness
- Constrained service availability – workforce shortages
- In-language access for some services, like TCARE
- Use of technology, virtual platforms, digital access
- Opportunities for aging service providers to learn from disability community – use of assistive technologies, digital access
- Decision making and services driven “by and for community”
- Importance of relationships and a network mentality



# Program Proposals

- Integrate primary function of Options Counseling into Information and Assistance activities\*
- Definition of Assistance clarified to also include assistance completing online, web-based applications or forms
  - Referral to other resources for access to equipment, broadband, digital skills training may also be appropriate after the initial access issue is addressed
- Agencies can deliver any of the Community Living Connections services. Support development of Service Rosters.



# Options Counseling

- Background
- Options Counseling components
  - Personal Interview
  - Decision Support\*
  - Action Plan
  - Follow Up



# Deep Dive

Options Counseling	Information and Assistance	Care Coordination
Personal Interview	Screening	Comprehensive Assessment
Decision Support	Information Giving and Assistance	Service Planning
Action Planning		Service Planning
Follow Up	Follow Up	Case Coordination



Example: assistance evaluating pathways by providing unbiased information about benefits or considerations of service options in the context of the participant needs, circumstances and preferences





# Discussion

- Do the themes we identified in engagement resonate with you?
- What would you share to enhance our knowledge & understanding of access needs?
- Are there other functions or benefits of Options Counseling that ADS should consider?
- What other benefits, or consequences, of these proposals do you anticipate for your populations?



## Next Steps

- ADS incorporate input in program planning and investment design
- Contact Allison re: opportunities to participate on a rating panel
- Participate in a Region Meeting: <https://www.communitylivingconnections.org/partnerwithus/>
- **Bookmark and sign up for updates on HSD Funding Opportunities Webpage!!**



# Resources

- HSD Funding Opportunities webpage
- Aging King County Contracted Provider Resource
- Community Living Connections webpage
- Community Living Connections Intro Presentation



# THANK YOU

Questions: [Allison.Boll@seattle.gov](mailto:Allison.Boll@seattle.gov)

