

A map of King County, Washington, overlaid with a color-coded risk assessment for extreme heat. The map shows various neighborhoods and parks, with colors ranging from green (low risk) to red (high risk). The highest risk areas are concentrated in the central and eastern parts of the county, particularly around the urban centers. The map also shows major roads and water bodies.

# KING COUNTY EXTREME HEAT MITIGATION STRATEGY

*Daaniya Iyaz, Extreme Heat Mitigation Strategy Specialist*

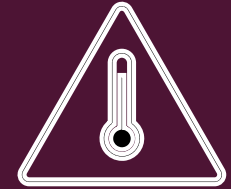
*Lara Whitely Binder, Climate Preparedness Program Manager*

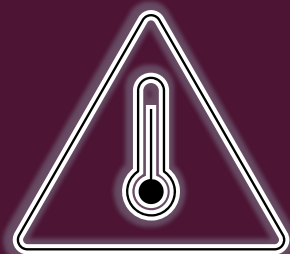
## ADS ADVISORY COUNCIL

14 APRIL 2023

# AGENDA

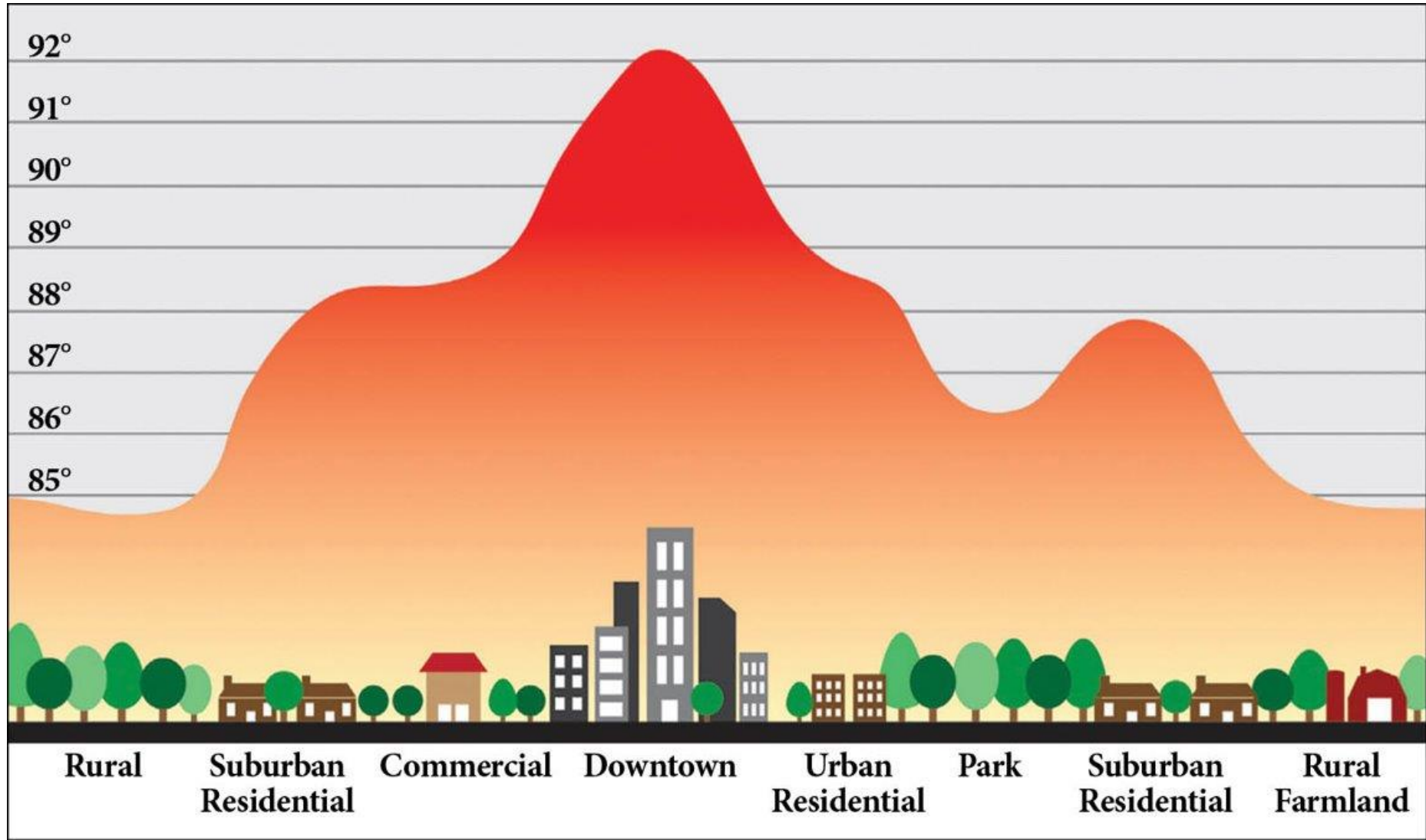
- 1) Background & overview: Heat strategy and ADS Actions
- 2) Discussion: What should the heat strategy address?
- 3) Discussion: Feedback on potential heat actions.
- 4) Further engagement opportunities
- 5) Wrap up





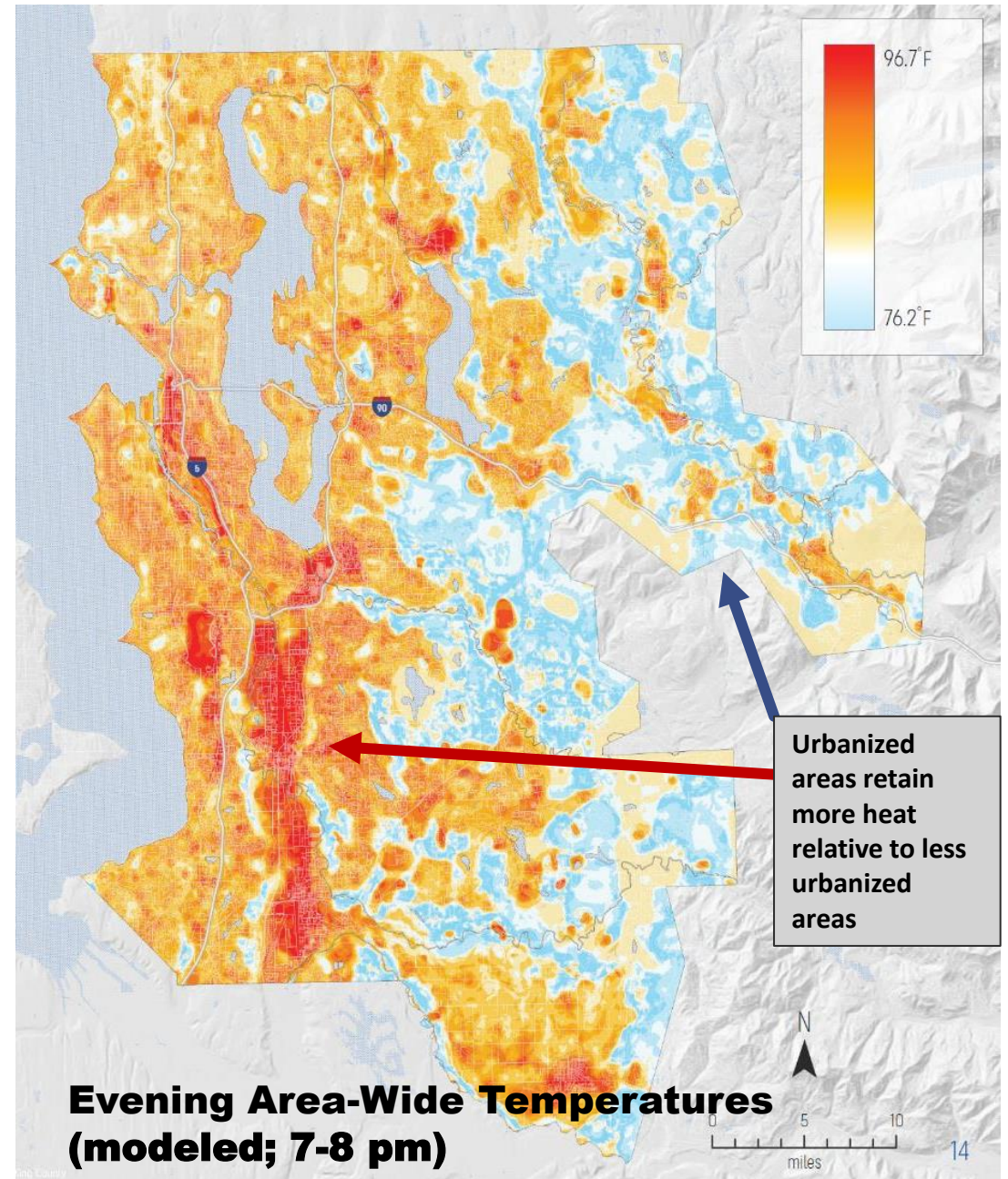
# BACKGROUND & OVERVIEW: HEAT STRATEGY & ADS ACTIONS

# URBAN HEAT ISLAND EFFECT



## 2020 HEAT MAPPING PROJECT

- Data collection: July 27, 2020
- Factors that influence heat include:
  - Impervious (hard) surfaces
  - Tree canopy
  - Built environment





WE ARE MORE  
VULNERABLE TO HEAT  
THAN WE REALIZE

# KING COUNTY'S FIRST EXTREME HEAT MITIGATION STRATEGY

- Action in King County's Strategic Climate Action Plan (SCAP)
- Funded by FEMA's Building Resilient Infrastructure and Communities (BRIC) Grant in September 2022
- Audience: King County, local jurisdictions, community organizations
- Focus
  - Short-term actions (emergency management, communications, etc.)
  - Long-term actions (urban tree canopy management, building codes, etc.)
- Completion date: June 2024

## Priority Actions

Prep. 3.1.1 **Develop and implement an Urban Heat Island Strategy.** *(Climate Action Team)*

### King County Role



Convene

### Connections & Considerations



Climate Equity



Health Blueprint



Reduce Emissions

## STRATEGY DRAFT GOAL STATEMENT

**The goal of the King County Heat Mitigation Strategy is to equitably address and reduce the harmful effects of extreme heat on people and places in King County by:**

- Effectively preparing for and responding to heat events when they occur,
- Expanding the use of built and nature-based solutions that reduce extreme heat impacts,
- Strengthening the resilience of communities most affected by extreme heat.

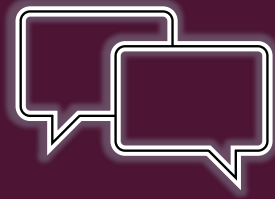




DISCUSSION:  
WHAT SHOULD THE HEAT  
STRATEGY ADDRESS?

## DISCUSSION QUESTIONS – JAMBOARD ([CLICK HERE](#))

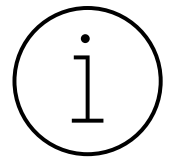
1. What needs, barriers, and concerns should we address in the heat strategy to reduce heat impacts on seniors and people living with disabilities who are...
  - Homebound, including in-home care support services?
  - In independent living facilities?
  - In nursing homes and assisted living facilities?
  - A part of other groups or scenarios that we are missing?
2. Is there anything that would be uniquely challenging for people living with disabilities vs. seniors?
3. Who are the trusted resources that seniors and people with disabilities turn to for emergency and health-related information?



# DISCUSSION: POTENTIAL HEAT ACTIONS

# ADS ACTIONS STARTED BEFORE SEATTLE HEAT WORKSHOP (MAY 2022)

- Supporting emergency planning
  - Developing cooling options with Seattle Housing Authority
  - Distributing heat safety information
- Establishing senior centers as cooling sites
- Fan distribution to ADS clients
- Providing at-risk clients with information and resources
- Supplying ADS staffing for on-call resources (Health One) and emergency service needs



## ACTIONS FROM SEATTLE HEAT WORKSHOP (MAY 2022)

ADS HEAT ACTIONS	DESCRIPTION	SOURCE	ADS AC NOTES
Promoting AlertSeattle to clients	Ask ADS staff to encourage clients with email addresses to sign up for AlertSeattle.	Seattle heat plan – Aug. 2022 update	
<b>Recommended action:</b> Provide portable cooling centers plans to senior centers	Provide portable AC units and establish contracts that would allow senior centers to extend hours during a heat event and to build out a supporting transportation plan.	Seattle heat plan – Aug. 2022 update	
<b>Recommended action:</b> Create a recurring heat response emergency budget	This option was recommended for all agencies and programs at the heat workshop. One option was to contribute to an emergency response fund at the end of each year.	Seattle heat plan – Aug. 2022 update	

## ACTIONS FROM OTHER HEAT STRATEGIES

POTENTIAL HEAT ACTIONS	DESCRIPTION	IN ACTION LOCATIONS	ADS AC NOTES
Buddy check-in system	Check in program either via phone or in-person for volunteers to check in on seniors and people with disabilities. Could also be a text system sent to loved ones that gives them a list of check in questions.	New York, Indiana, California, DC	
Passive cooling retrofits in senior housing and care facilities	Incentivizing installation of external shades, insulated interior shading, and window box fans in existing facilities to promote indoor cooling. Require these for new construction.	Research ongoing	
Community heat relief training for healthcare workers, social service providers, and volunteers	Educate on heat impacts and available heat mitigation/adaptation programs to offer seniors and people with disabilities. NYC: Trained home health aides.	New York, Indiana	

## OTHER ACTION SUGGESTIONS? JAMBOARD ([CLICK HERE](#))

- Potential topic areas:
  - Emergency response
  - Communications and education
  - Housing infrastructure
  - Community involvement and response



# FURTHER ENGAGEMENT OPPORTUNITIES



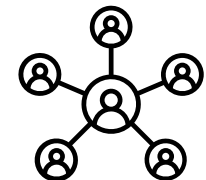
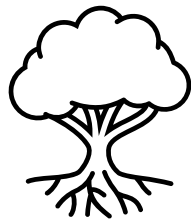
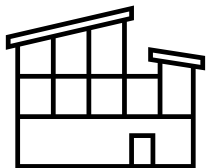
## SEEKING VOLUNTEERS: HEAT-SENSITIVE POPULATION WORKGROUP\*

- Workgroup purpose: Ensure we are developing a strategy that will be effective and accessible for heat-sensitive populations, such as seniors and people with disabilities.
- Format: **3 – 4 meetings** from ~May 2023 to ~Feb. 2024; **1.5 hours** each.
  - Meetings 1 – 2: Identify potential heat mitigation actions, evaluate and refine actions.
  - Meetings 3 – 4: Provide input on implementation and action evaluation, review any draft materials.
  - Total commitment per person: Around **6 hours total over approx. 10 months.**
- Other potential members: DCHS, HSD, direct service providers.

\*In early planning phase; meeting agendas are still in development.

## OTHER WORKGROUPS\*

- Built environment
- Urban forestry and open space
- Heat response
- Community partners



\*In early planning phase; participant list and meeting agendas are still in development.

# PLANNED WORKGROUP TIMELINE

Workgroup meetings will be **1.5 hours** each.

Location (in-person or virtual) dependent upon participant preference.

**May/June 2023**

First meeting:  
Ideation

**Sept./Oct. 2023**

Third meeting:  
Action selection,  
implementation  
planning

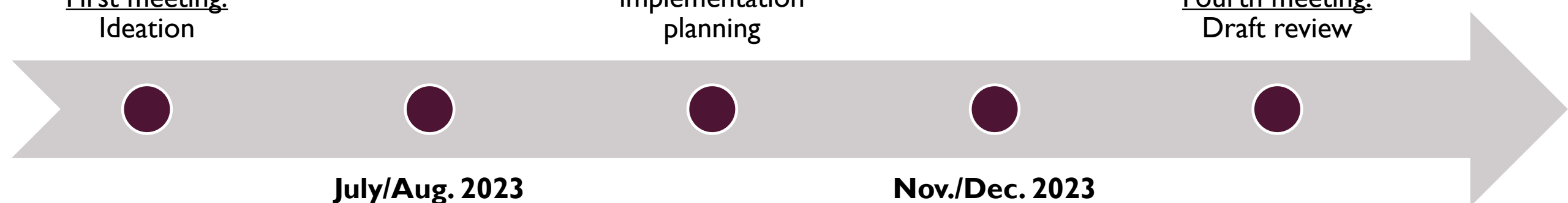
**Jan./Feb. 2024**

Fourth meeting:  
Draft review

**July/Aug. 2023**

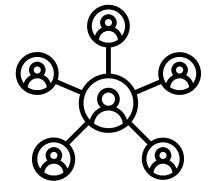
Second meeting:  
Ideation, action  
selection

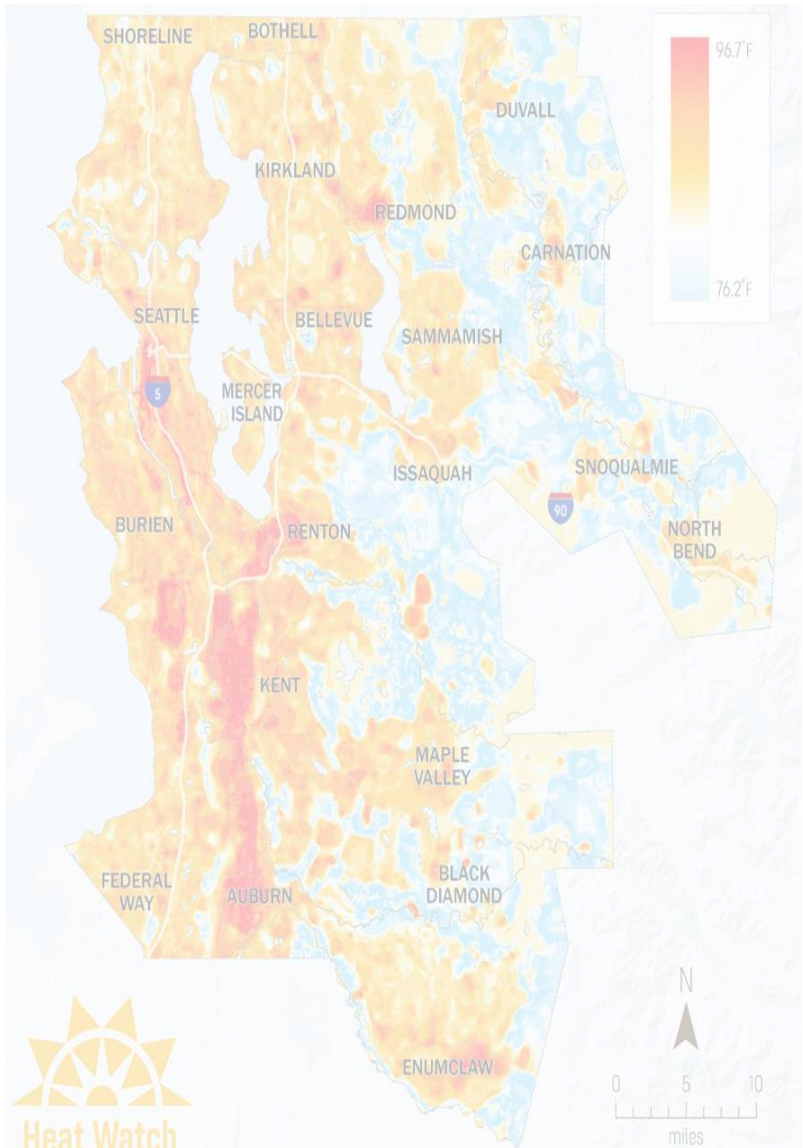
**Nov./Dec. 2023**



## NEXT STEPS

- Incorporate this feedback into heat action development and prioritization
- Convene workgroups
- Follow up with updates





THANK YOU FOR YOUR TIME!

*Follow up questions or comments?*

*Contact Daaniya Iyaz ([daiyaz@kingcounty.gov](mailto:daiyaz@kingcounty.gov)).*