

# The Inner Workings of the ADS Budget

Advisory Council Retreat  
January 11, 2013

# Advisory Council Sponsors

- **City of Seattle**

**Dannette Smith, Director**

**Seattle Human Services Department**

- **King County**

**Jackie MacLean, Director**

**KC Dept. of Community & Human Services**

- **United Way of King Co.**

**Sara Levin, Vice President**

**Community Services**

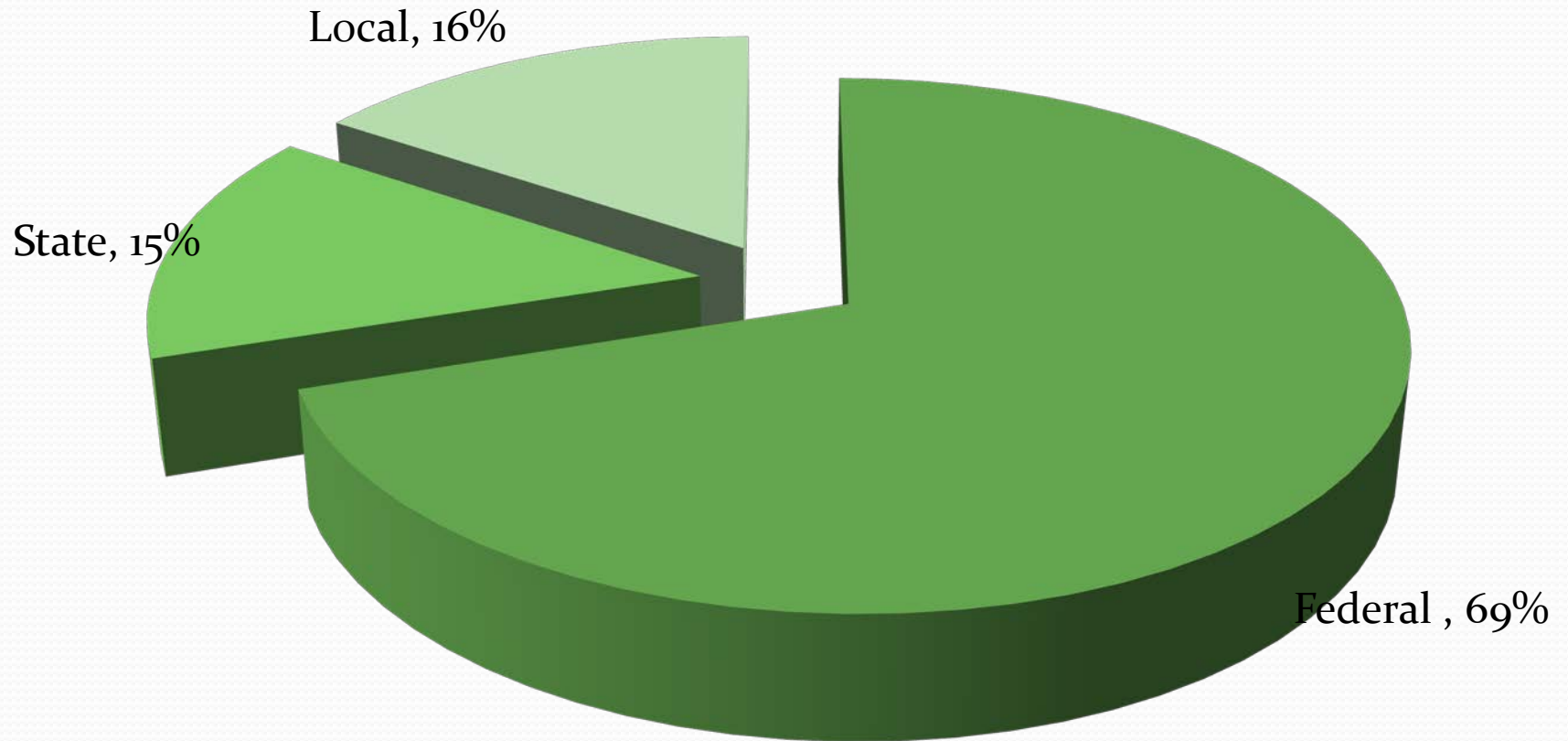
# Three Budget Viewpoints

- I. Source
  - Federal
  - State
  - Local
- II. Level of Discretion
  - Mandated
  - Limited discretion
  - Discretionary
- III. Service Area Mix

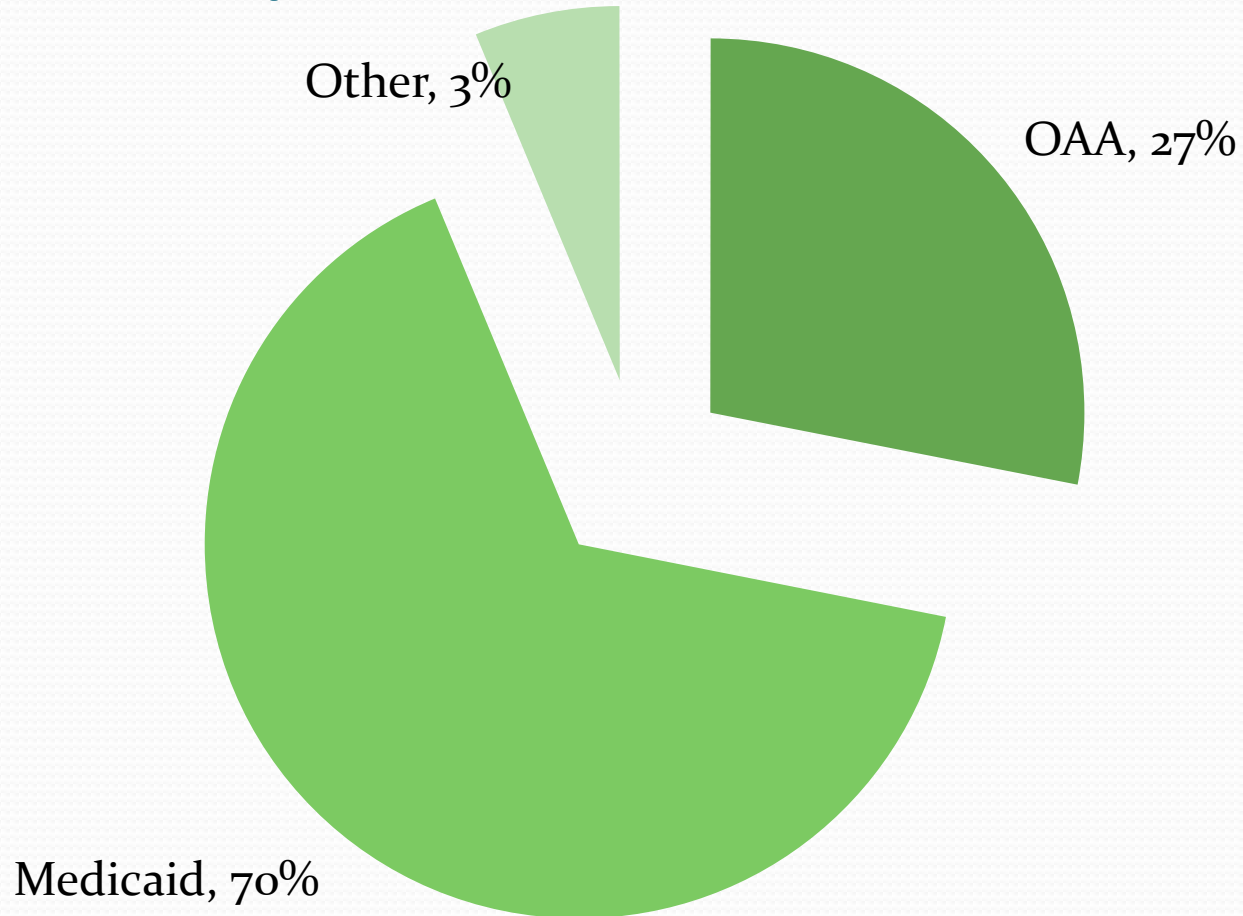
# Advisory Council

- **The 1965 Older American's Act (OAA) authorizes Advisory Councils**
- Identify the needs of older persons and adults with disabilities in King County;
- Advise on services to meets these needs; and
- Advocate for local, state and national programs that promote qualify of life for older adults and individuals with disabilities.

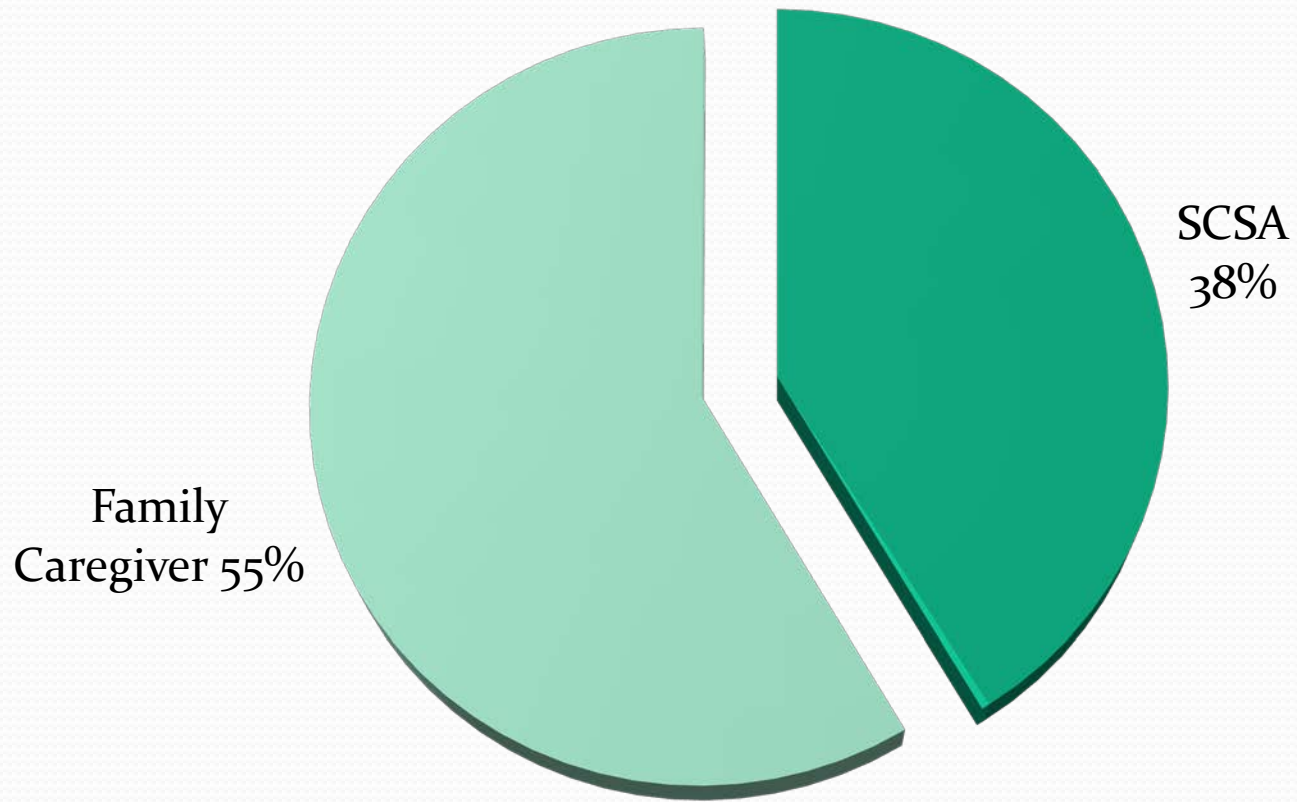
# I. 2013 Revenue Sources: \$39.6 million



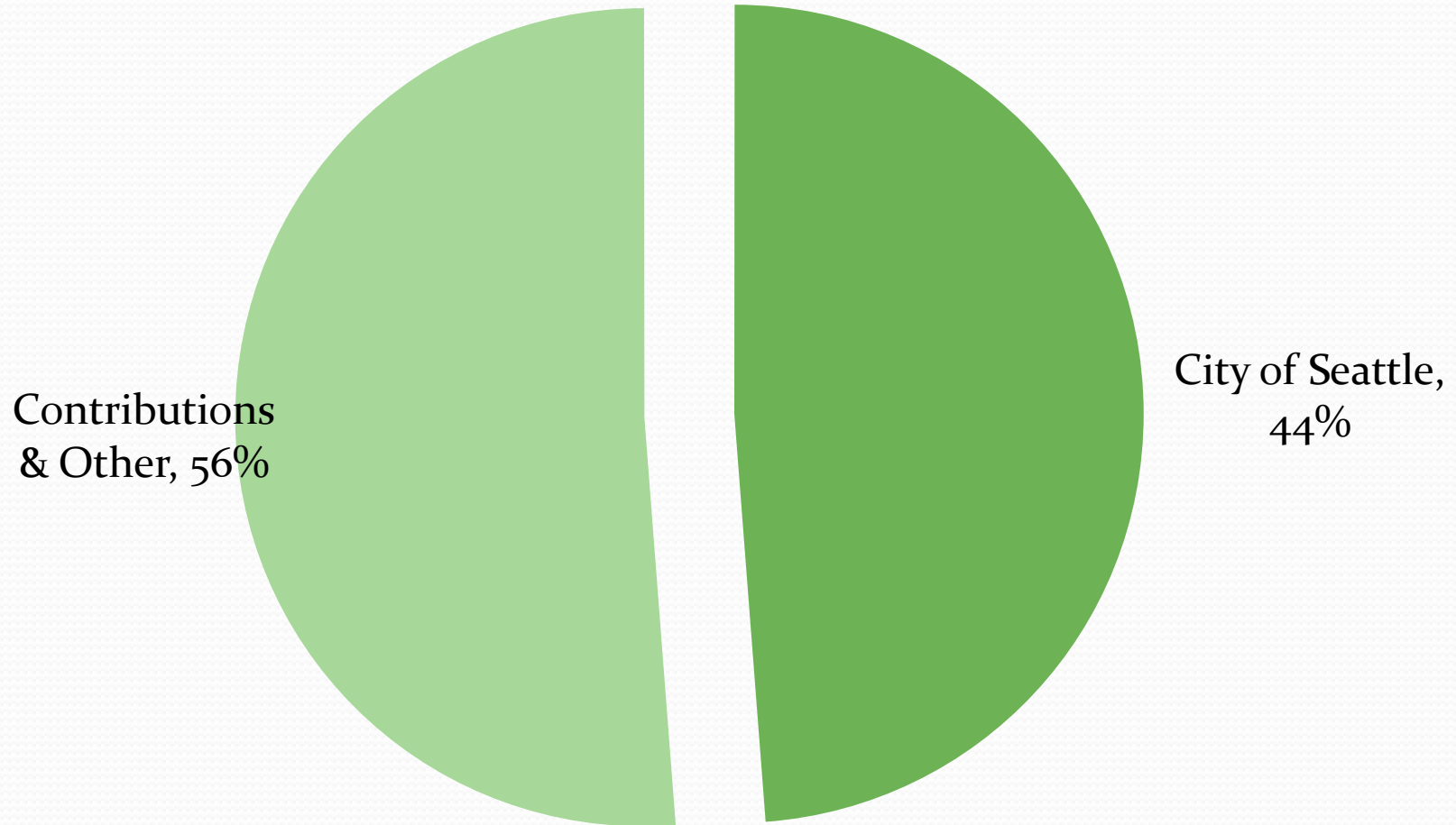
# Federal: \$27.2 million



# State: \$5.8 million



# Local: \$6.5 million

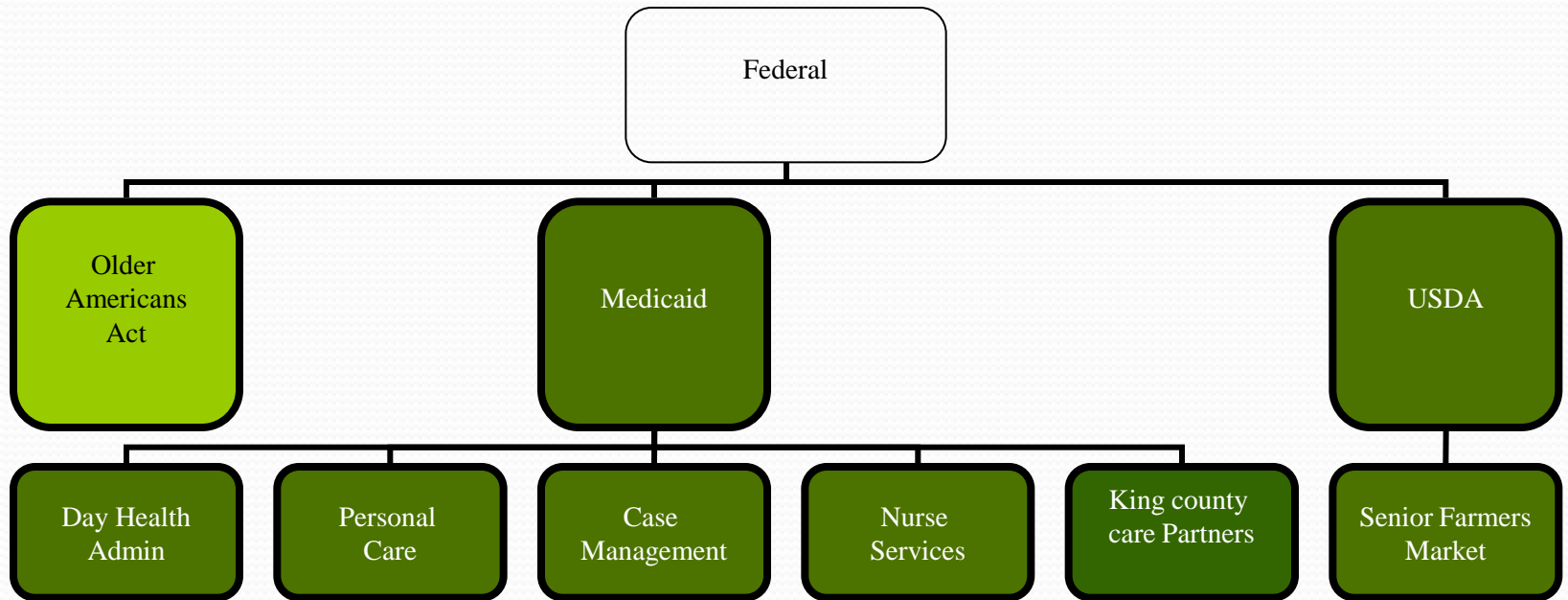




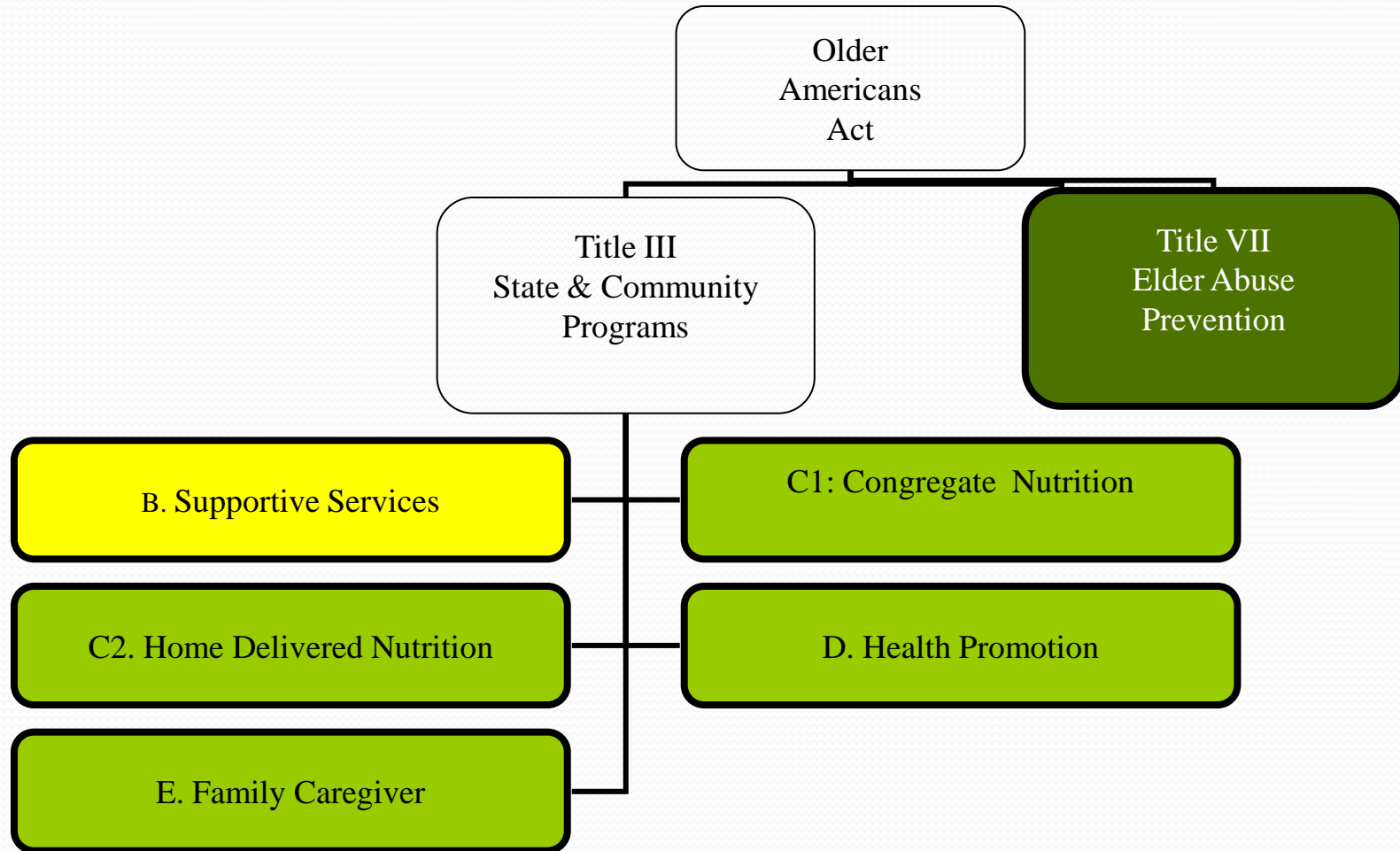
## II. Level of Discretion

- Categorical – Funder dictates type of service and who will receive service
- Limited discretion – Funder identifies service areas. Local AAA determines amount by service area.
- Discretionary – Funder allows local AAA broad discretion in service area amounts.

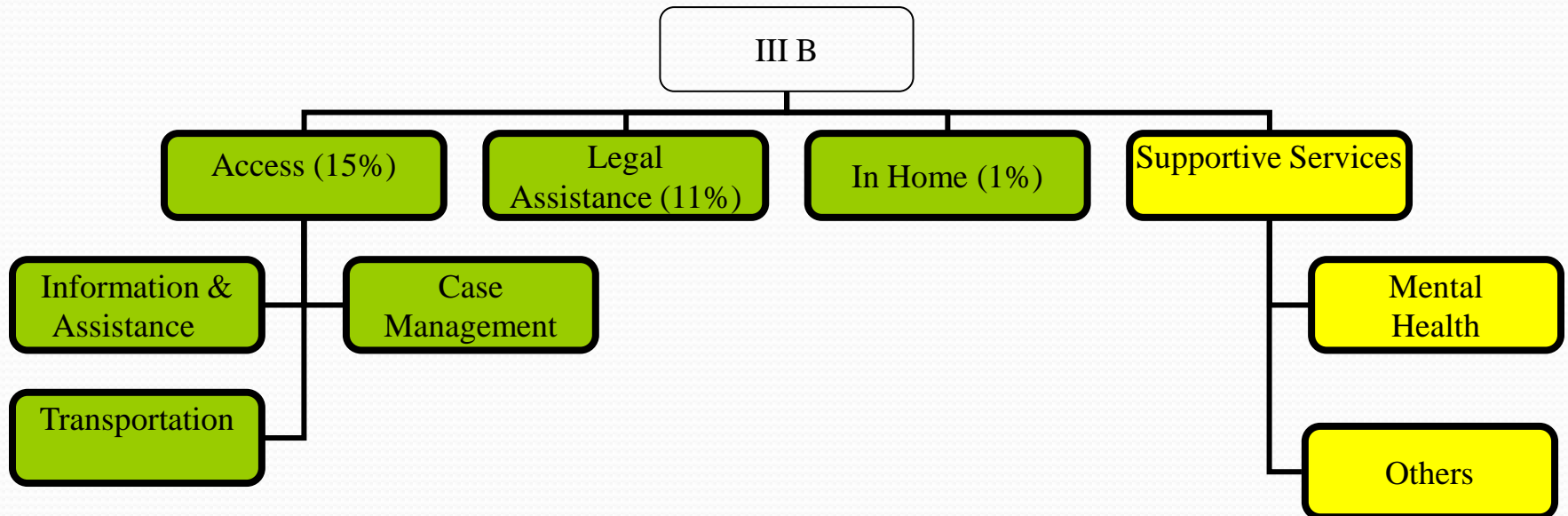
# Federal Revenue



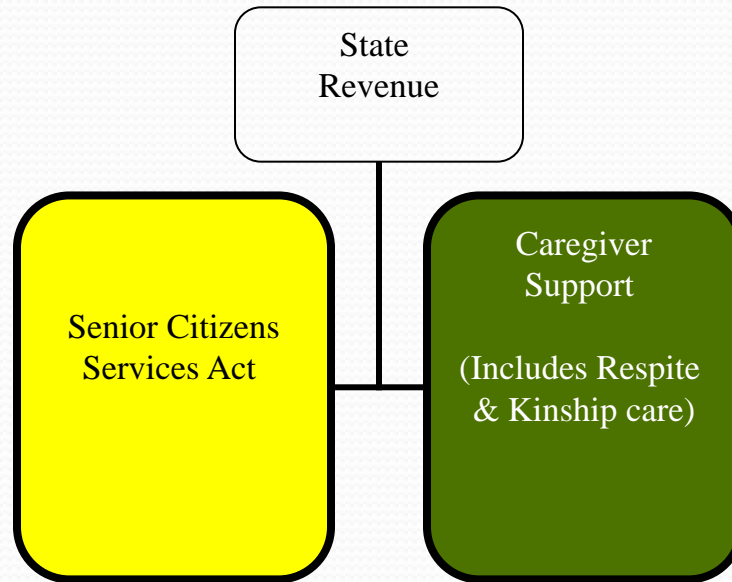
# OAA Revenue



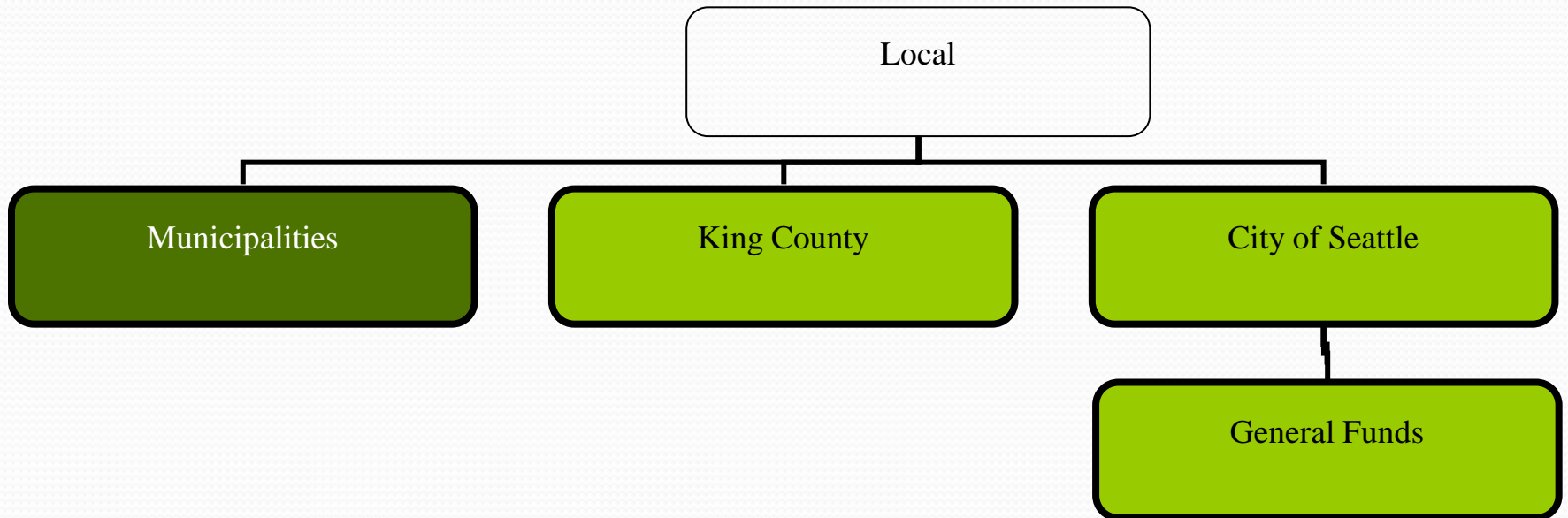
# Title III B: Supportive Services



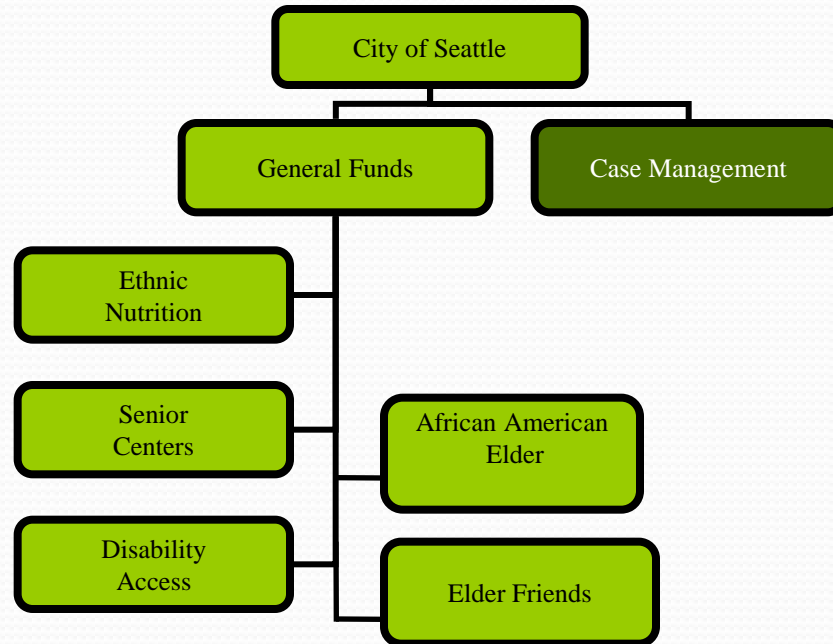
# State Revenue



# Local Revenue



# Local: City of Seattle



# Case Management Network

- Chronic Care Management (ADS)
- Long-Term Care Case Management (ADS, Evergreen Care Network, Chinese Information Service Center, Asian Counseling Referral Service)
- Seattle Housing Authority Service Coordination (ADS)
- African American Elders Program (Catholic Community Services)
- Discretionary Case Management (ADS, ECN, ACRS, CISC)
- Elder Abuse Victim Support Services (ADS)



# Why In-Home Case Management?

- Greater incidence of chronic conditions - increase from 125 million individuals in 2000 to 157 million by 2020
- Care for people with chronic conditions accounts for 77% of the Medicaid spending.
- In home care is the preferred option of those who need care and much less expensive than institutional or facility-based care.

# Case Management Common Elements

- Clients are assessed in their home environment to identify needed supports to maintain their independence.
- Service plan is developed to address identified needs.
- Home care is the primary supportive service for the Medicaid program
- Case managers maintain regular contact with clients, family and caregivers to ensure a stable care plan.

# Case Management

- Long-Term Care (LTC) Case Management, funded by Medicaid, is the largest program.
- Serves aging and disabled Medicaid clients 18 years of age and older, gives in-depth assistance to frail individuals with multiple health and social needs
- Serve close to 11,000 people each month needing long term care in their own home.
- LTC Case Management scope of work will be impacted by the implementation of managed care in King County.